

SANGWOO BROCHURE 2019

# WE BUILD TOMORROW



**SANGWOO PRECISION CO.,LTD**

Powerful Technology to Change the World  
Global Advanced Technology Enterprise

WE BUILD  
TOMORROW



**SANGWOO PRECISION CO.,LTD**

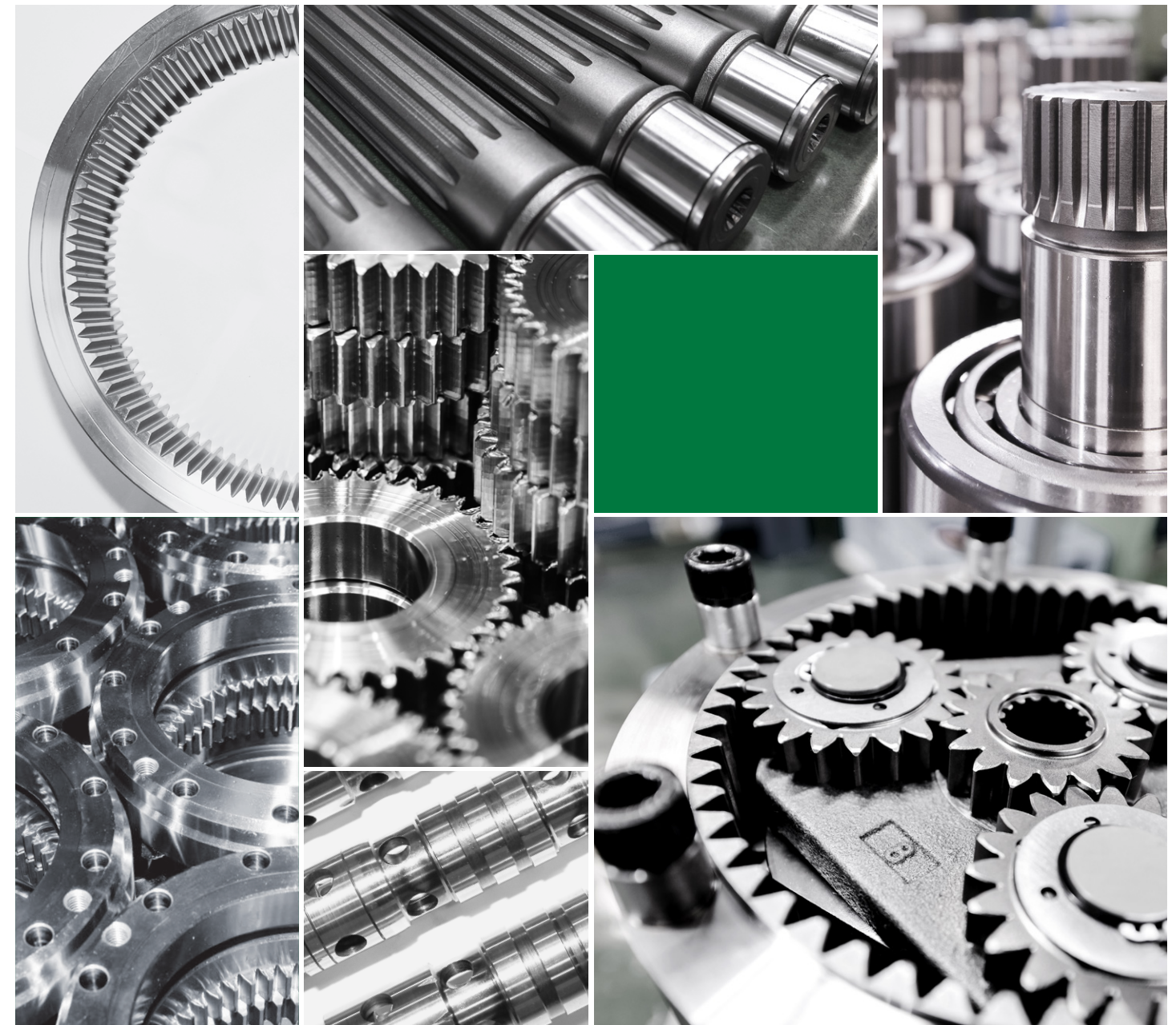
(155-4, Sangpyeong-dong) 12, Gongdan-ro 188beon-gil,  
Jinju-si, Gyeongsangnam-do

**Tel.** +88-55-758-0816~7

**Fax.** +88-55-758-0819

**E-mail.** swith97@hanmail.net

[www.swith.co.kr](http://www.swith.co.kr)





# We Build Tomorrow

 SANGWOO PRECISION CO.,LTD

## Contents

4-5p.  
GREETING

6-7p.  
HISTORY

8-9p.  
**COMPANY PROFILE**  
Vision / Philosophy  
Organization / Certificates

10-13p.  
**MAIN PRODUCT**  
Heavy Equipment parts  
Automobile parts  
Forklift parts  
Agricultural Machinery parts

14-15p.  
**MAIN PROCESS**  
Main Process  
Production Facilities List

16-17p.  
**PRODUCTION FACILITIES**

18p.  
**QUALITY POLICY**

19p.  
**HSE MANAGEMENT POLICY**

People and people, and nature...  
All executives and employees share a strong belief in the world in which people live together, and it is practiced through management activities.



Based on the vision, the comprehensive management system is operated by having the safety as the highest priority value. And we are strengthening the win-win relationship with partner companies for the enhancement of competitiveness. SANGWOO Precision Co., Ltd. will create the value of sharing through which all stakeholders can be together and make a sustainable society.





# SANGWOO WE BUILD TOMORROW

**Continuous R&D and technological innovation are pursued for the promise with customer.**

We sincerely thank you for your support of SANGWOO Precision.

Since 1986, we have been supplying heavy industries, ship and industrial hydraulic parts and motor parts through continuous R&D and technological innovation for the promise with customer.

**The highest quality is  
a promise to our customers!**



To fit the big trend of the fast-changing future industry, SANGWOO Precision has CNC production facilities and measuring instruments, and as the hydraulic market changes, we have built high trust and good awareness for the customers with new technologies and diverse products of the highest quality. The best quality is the promise to our customers, and we have a reliable business relationship to realize customer satisfaction.

**Doing the utmost to give  
satisfaction and impression!**



We believe that all of these accomplishments are due to the care of the customers who have trusted and led our company. And we will do our best to provide maximum satisfaction and impression to our customers in the future.

**CREATE FUTURE WITH CHANGES AND CHALLENGES**



# History

## Main History

- **Establishment 1986** 06 Establishment of SANGWOO Enterprise
- **Development 2000** 03 Registration of FLUTEK KAWASAKI Ltd. as a partner company  
**2004** 04 Export of D/SHAFT to KAWASAKI Heavy Industries (KPM)  
 12 Registration of SUNJIN Power Tech Co., Ltd. as a partner company  
**2007** 12 Establishment of SANGWOO Precision Corporation  
**2009** 05 Registration of venture business designated as SME  
 12 Registration of management innovation-based SME
- **Take-off** **2010** 01 Registration of management innovation-based SME  
 09 TS 16949 certification  
 (Change to ISO90001 certification in August 2013)  
**2011** 03 Authorization of corporate annexed research institute  
 08 Registration of INNO BIZ  
 09 Registration of EATON as a partner company  
 10 Recognition as a clean business site  
 11 Registration of HYMS Co., Ltd. (Hyundai Heavy Industries Group) as a partner company (At present, Hyundai Core Motion)  
**2012** 06 Designation of SME with good export prospects  
**2013** 06 Registration of S&T Dynamics Co., Ltd. as a partner company  
**2014** 08 Registration of China SANY Heavy Industries as a partner company  
**2015** 07 Registration of China LONKING Heavy Industries as a partner company  
**2016** 09 Extension of Factory No.2 at 155-5, Sangpyeong-dong, Jinju-si  
**2018** 03 Development of 5 tons speed reducer assembly  
 11 Mass production and delivery of 5 tons speed reducer assembly  
 12 Won the award certificate by the Minister of Trade, Industry and Energy to commemorate the Trade Day

## Technology to prepare for the future, SANGWOO Precision Co., Ltd.

SANGWOO Precision is continuously moving forward a respected 100-year-old company.



Vision



Company specializing in the production of gear  
Global Small Giant

As a company that challenges, communicates and manages at all times, growing from a small company to a great company is the vision of SANGWOO Precision Co., Ltd.

Philosophy

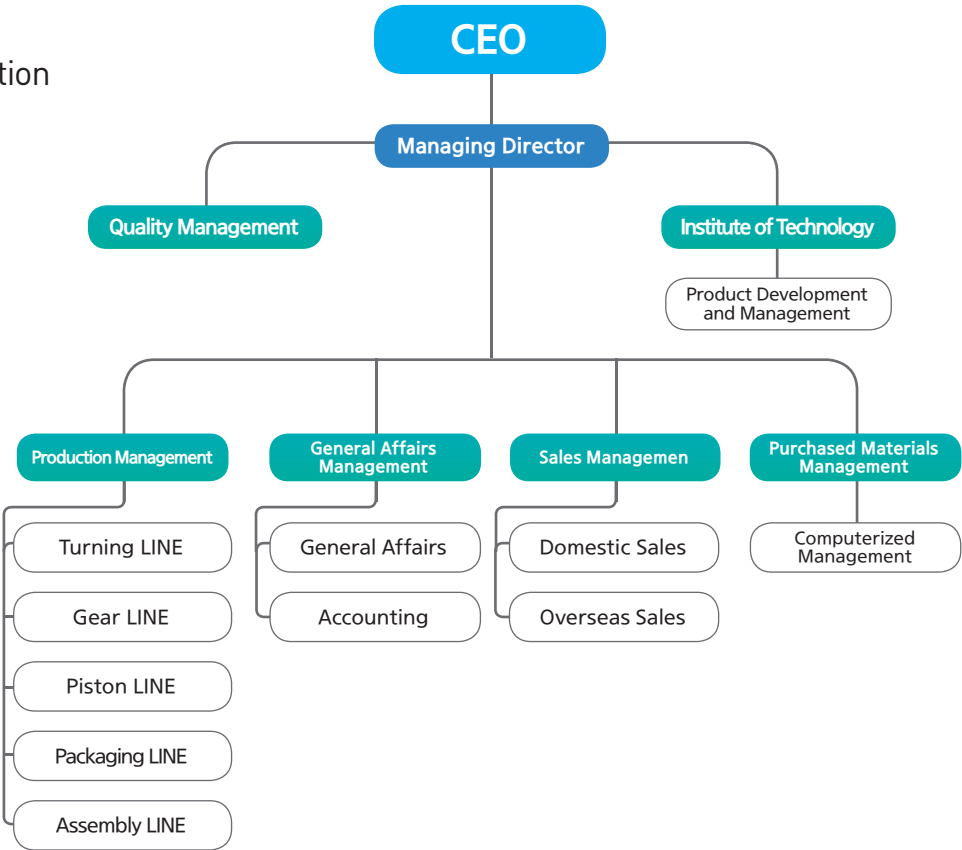


Putting customers first  
Company that opens up the value of life

A company that puts customers first SANGWOO Precision Co., Ltd. will become a true best partner for growth of customer that thinks of customer satisfaction as the best value.

Organization

We aim to an optimal organizational composition for product R&D and customer satisfaction.



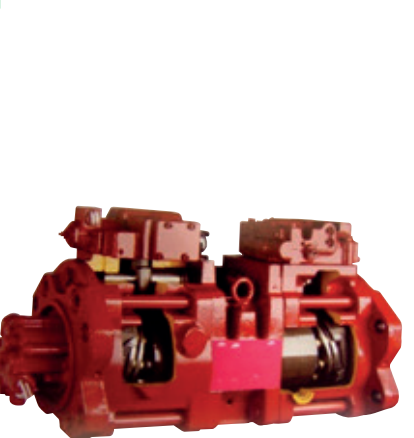
Certificates

- 01 ISO 9001:2015
- 02 ISO 14001:2015
- 03 Confirmation of INNO BIZ
- 04 Confirmation of Venture Business
- 05 Certificate of Corporate Annexed Research Institute
- 06 Confirmation of Parts and Materials Specialized Company
- 07 Designation of SME with Good Export Prospects
- 08 Won the award certificate by the Minister of Trade, Industry and Energy





# Heavy Equipment parts



Main Pump parts



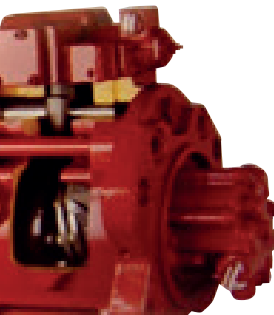
Swing Reduction parts



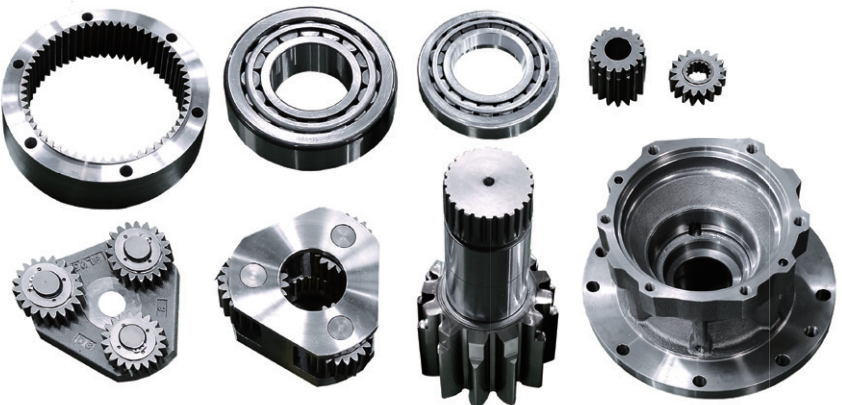
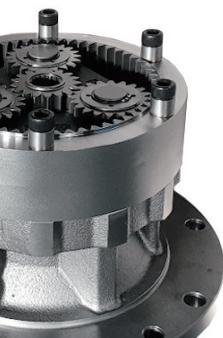
Traveling Reduction parts



Main Pump parts



Swing Reduction parts



Traveling Reduction parts





# Automobile parts



Main Drive  
Transmission Gear



Main Shaft  
Transmission Gear



Main 1st Gear  
Transmission Gear



# Forklift parts



T/M Output - Shaft



SHAFT ASS'Y - LAY / INPUT



T/M Gear Ring



# Agricultural Machinery parts



Ring Gear & Planet Gear  
Assembly



Gear / Internal / 66T



T/M Output-Shaft

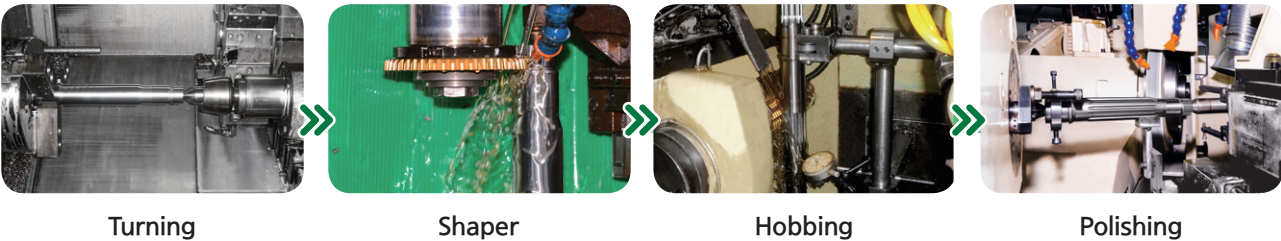




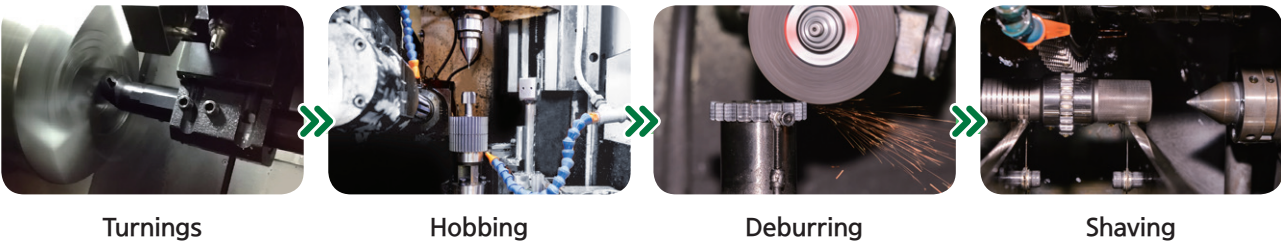
# Main Process

## Production Process

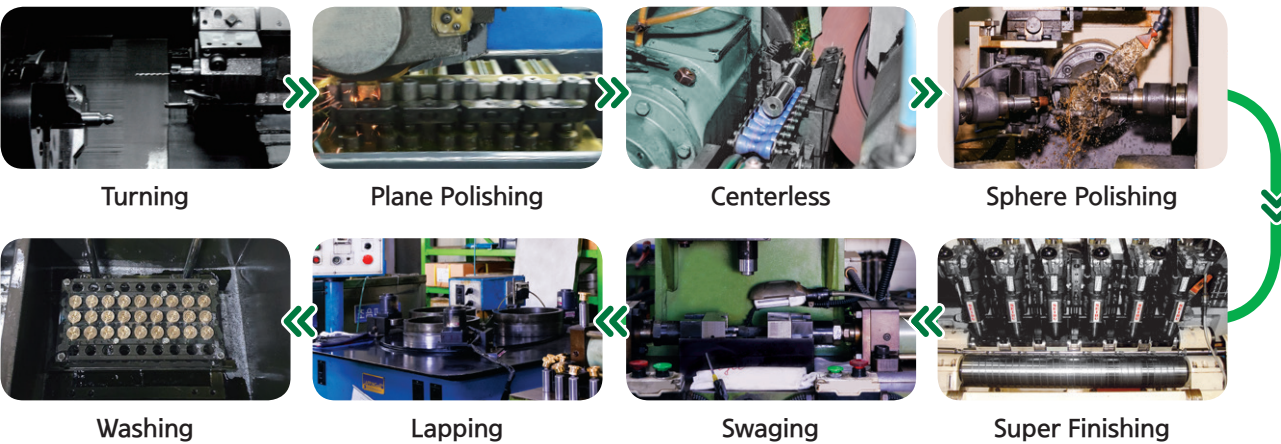
### SHAFT



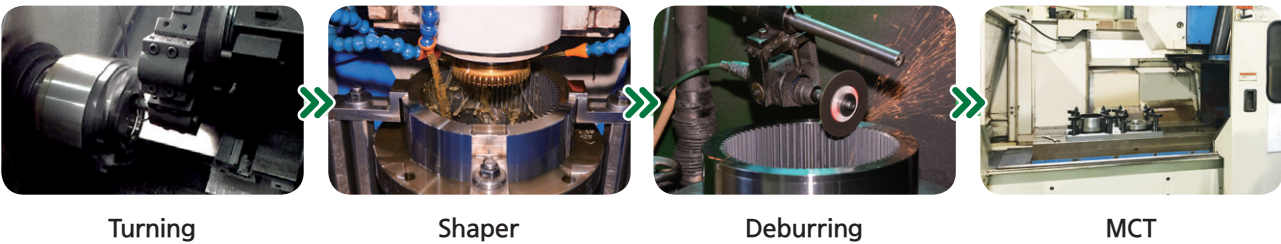
### GEAR



### PISTON

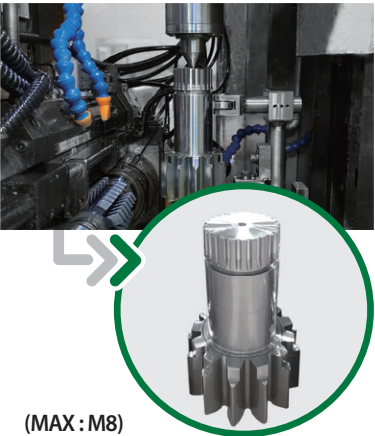


### RING GEAR



## Production Facilities List

### CNC Gear Hobbing M/C



(MAX : M8)

### CNC Gear Shaper (4 axes)



Helical Gear

### CNC Gear Shaper (8 axes)



Helical Gear

Name of production facility	Module	No.	Model	Manufacturer	Remark
CNC Lathe M/C		6	LYNX220L	Doosan Infracore	
CNC Lathe M/C		2	QT-18N	Hyundai(MAZAK)	
CNC Machining Center		2	AJV-25/405	MAZAK	
CNC Gear Hobbing M/C (5 axes)	M4	4	KN150	KASHIFUJI	Crowning, TAPER is possible
CNC Gear Hobbing M/C (5 axes)	M7	3	HB200	KASHIFUJI	Crowning, TAPER is possible
CNC Gear Hobbing M/C (3 axes)	M7	2	KB200	KASHIFUJI	
Gear Shaving M/C (3 axes)	M8	5	GSF-400	KANZAKI	
CNC Gear Shaper M/C (4CNR)	M6	1	GSM-25N	KARATS	Helical
CNC Gear ShaperM/C (3CNR)	M4	2	GSM-12N	KARATS	
CNC Gear ShaperM/C (4CNR)	M4	1	GSM-12N	KARATS	Helical
CNC Gear ShaperM/C (3CNR)	M4	1	GS-101AN	KARATS	TAPER is possible
NC Gear Shaper M/C	M4	1	GS-101AN	KARATS	
NC Gear Shaper M/C	M4	1	SS180HC	OE	
Gear Shaper M/C	M4	1	SS250HC	OE	
NC Gear Shaper M/C	M12	3	5B150	STANKO	
NC Gear Shaper M/C	M12	1	5M150	STANKO	
NC Gear Shaper M/C	M8	3	5A140	STANKO	
CNC Gear Shaper M/C (5CNR)	M8	1	SA63	MISTUBISI	TAPER is possible
CNC Gear Shaper M/C (8CNR)	M8	1	SB40	MISTUBISI	Spur, Helical Gear are possible
Gear Deburring Machine		3	GDK-500	KANZAKI	
CNC Cylindrical Grinding M/C		1	RB 32-50	MISTUBISI	
CNC Angular Grinding M/C		1	RB 32-50	MISTUBISI	
CNC Gun Drill M/C (3 axes)		1	MEG-1000S	MIROGU	
CNC Gun Drill M/C (3 axes)		1	MHG-600-NC	MIROGU	
Plane Polishing Gun-drill		1	NS-1	NAGASE	
Sphere Finishing and Sphere Lapping M/C		1	KY-1	KENCO	
Sphere Finishing and Sphere Lapping M/C		1	CSHA-08D	GREEN TECH	
Centerless Polishing M/C		1	DC-18	Daeyoung Machinery	
Centerless Polishing M/C		1	20HSI	OHMIYA	
Super Finishing M/C		1	ASM-500ZR	SEIBU	
Super Finishing M/C		1	ASMC-100	SEIBU	Center type
Swaging M/C		1	KY-2	KENCO	
Plane Lapping M/C		1	IM-710	Ibche Corporation	
Washing M/C		2	JSD-3500	Josung Precision	
Washing M/C		1	SS-100	ShinShin Tech	

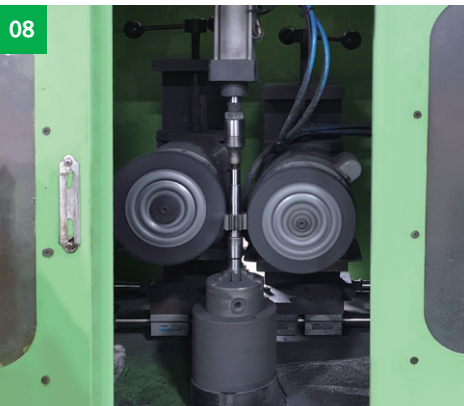
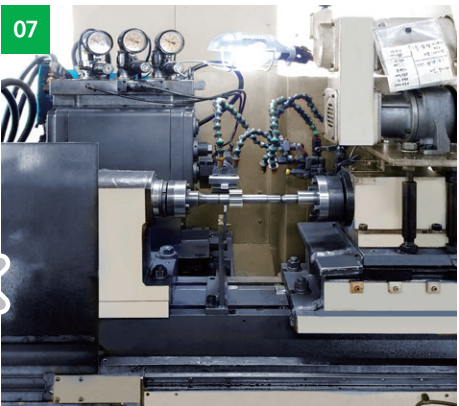
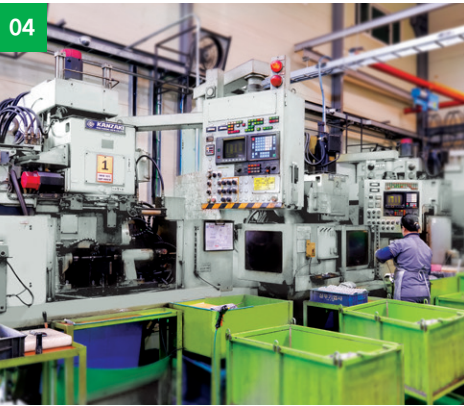
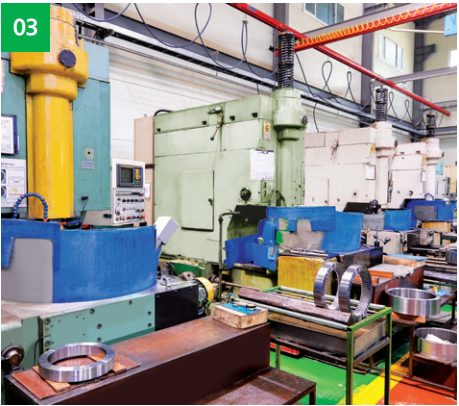


# Production Facilities

Through a bold investment in facilities and expansion of facilities, the top-quality parts are provided to the customer.

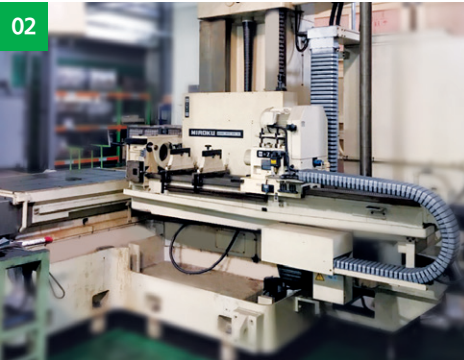
## GEAR / SHAFT LINE

- 01 CNC LATHE MACHINE
- 02 CNC SHAPER (SHAFT, GEAR)
- 03 CNC SHAPER (RING GEAR)
- 04 CNC SHAVING (SHAFT, GEAR)
- 05 CNC HOBGING (SHAFT, GEAR)
- 06 CNC POLISHING MACHINE
- 07 SUPER FINISHING
- 08 BRUSHING



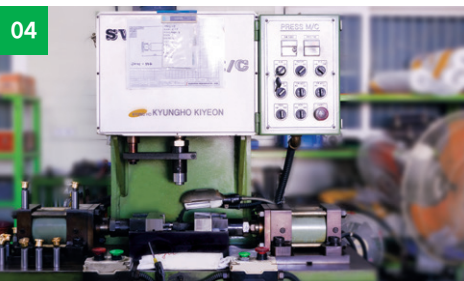
## RING GEAR LINE

- 01 CNC MACHINING CENTER
- 02 CNC GUN-DRILL (MEG-1000S)
- 03 CNC GUN-DRILL (MHG-600-NC)



## PISTON LINE

- 04 SWAGING PRESS M/C
- 05 SHOE LAPPING M/C
- 06 SPHERE GRINDING & LAPPING M/C
- 07 SUPER FINISHING M/C



## REDUCTION ASSEMBLY LINE



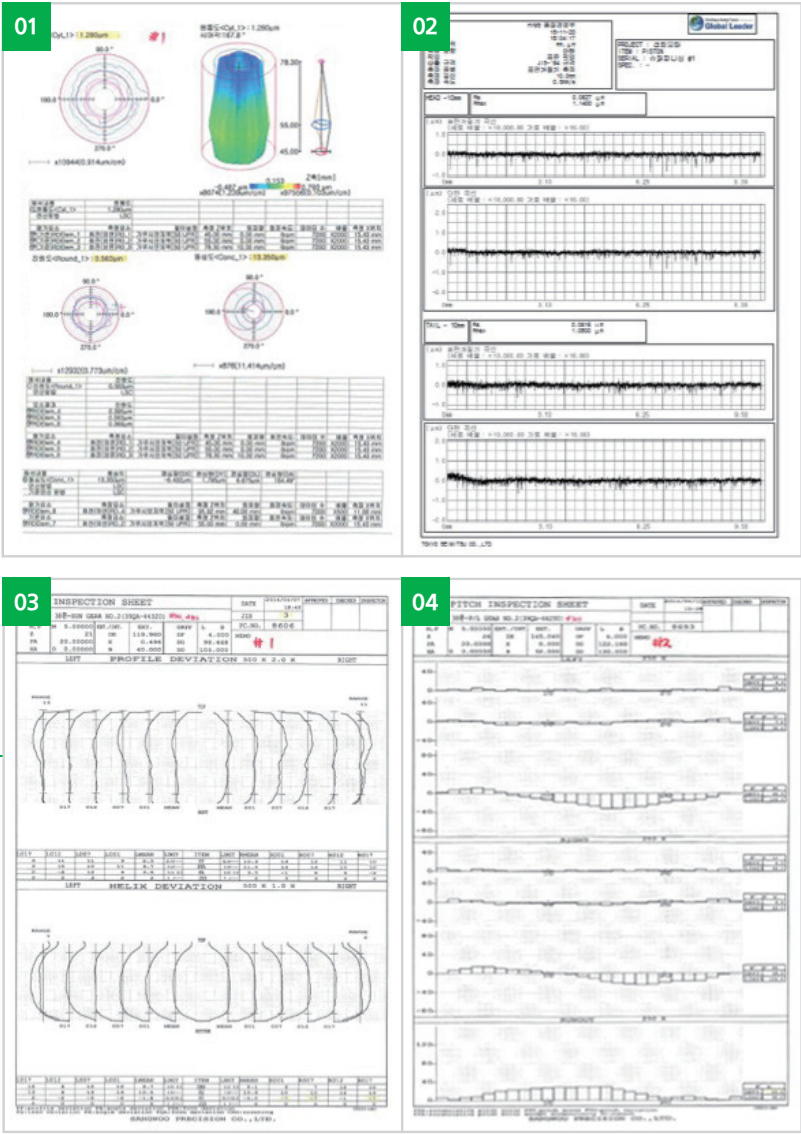


# Quality Policy

SANGWOO Precision Co., Ltd.,  
recognized for new technology  
development and quality  
We are driving towards the  
best today.

## Examination Test

- 01 Roundness/Cylindricity
- 02 Surface Roughness
- 03 Tooth Profile/Tooth Top Error
- 04 Concentricity



## Inspection Equipment



# HSE Management Policy

H(health), S(safety) and E(environment)  
based on the management philosophy of  
respect for human beings are the basic  
policies of management



## HSE management policy of SANGWOO Precision Co., Ltd. are as follows:

With H(health), S(safety) and E(environment) as the basic policies of management based on the management philosophy of respect for human beings, Sangwoo Precision Co., Ltd. makes continuous efforts for accomplishing zero disease, zero accident and zero pollution within each workplace. For this, we make the following efforts to achieve the satisfaction of customers, employees and stakeholders by taking into account the health and safety risks and environmental impacts in every process of design, manufacture and delivery of entire product produced.

- Create a corporate atmosphere in which all executives and employees understand and participate voluntarily by establishing and pushing ahead with HSE goals.
- Continuously reduce injuries and occupational diseases of executives and employees, and environmental impacts by analyzing and improving the impact of all processes.
- Provide technical and financial support to ensure that major risks and impacts are acceptable level by assessing HSE activities, and conduct periodical evaluations of HSE activities and continuously develop the system through corrective actions.
- Actively accept domestic and foreign regulations and standards and requirements of stakeholders regarding HSE, and take improvement actions. In addition, provide education and training to develop an efficient system through the efforts of executives and employees, including partner companies.